

GLEN ROCK HISTORICAL & PRESERVATION SOCIETY PRESENTS:

GLEN ROCK HISTORY

VOLUME 1, ISSUE 1

NOVEMBER 2013

WELCOME TO OUR NEWSLETTER!

This is our very first newsletter and with it we hope to keep you informed about topics of interest, including news about our organization.

2013 has been a busy year for the GRHPS. In the Spring, we placed a permanent gallery of historic Glen Rock photographs in the front lobby of the Municipal Building on Harding Plaza. Funded by membership dues and a 2013 Bergen County History Grant for Special Projects, the gallery brings Glen Rock history to the public in a perfect setting: the 1929 Borough Hall. The gallery is open for viewing during building hours.

Also in the Spring, the GRHPS and the GR Public Library co-sponsored the "Glen Rock Heroes" program held at the Library. Eight of Kathleen Walter's US History students at the GR High School presented their research on veterans from World Wars I and II, the Korean War and the Vietnam War—all with a Glen Rock connection.

A second joint program with the Library was the recent showing of "The Rock in the Glen" movie from 1964. The response was so positive that a second showing is scheduled for December 5th.

In September, a cooperative



project with the GRPD resulted in a display at the Library featuring police photos and items from 1914 to 1935. See page 3 of this newsletter for a selection of old police blotter entries.

Look inside for some more projects on tap for 2014!

WISH LIST:

- *Vintage clothing*
- *Glen Rock photos*
- *Photo postcards*
- *Erie Railroad items*
- *Vintage toys*
- *Old tools*
- *Auction posters*
- *Family letters*

HOUSE HISTORY TIPS

Researching the history of one's home is a fun and enlightening project. Here are a couple of tips to keep in mind if you decide to undertake a house history. Don't forget to share your research with the GRHPS!

- Many Glen Rock

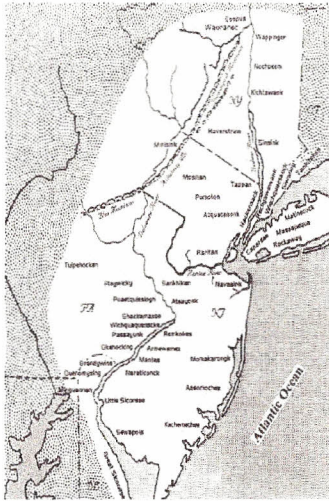
streets were RE-NUMBERED in the mid-1930s. To find your old house number, check Glen Rock Sanborn maps, which show both the old and new numbering.

- Some street NAMES

have changed over time. Here are a few: Jane Street (now Dean); Madison Road (Midwood); Ryan Road (part of Valley); Edwards Lane (part of Hamilton); Cherry Lane (Lincoln).

LOOK INSIDE:

LENAPE STORIES	2
NJ'S 350TH BD.	2
1919 PROJECT	2
PHOTO CARE	3
DONATIONS	3
POLICE BLOTTER	3
OUR PEOPLE	4



Map of Lenapehoking

LENAPE STORY TELLING AT THE LIBRARY

The GRHPS is excited to announce a special event that will be held in cooperation with the GR Library as part of our New Jersey 350 observation (see below).

On March 29th, 2014, storyteller extraordinaire Julie Della Torre will present an afternoon of Lenape stories. This family program will be held at the Library, starting at 2:00 pm.

Julie has been telling

traditional and literary fairytales to all ages since 1985. Julie says, "My background in education helps me to choose stories that are appropriate to students' developmental levels. The myths and folktales which I tell are filled with ethical dilemmas which provide a catalyst for deep discussion and reflection."

Julie is the resident-storyteller at several area schools, including Glen

Rock's Central School.

Glen Rock's Lenape heritage is evident today in street names, such as Tonawanda Road, and in our continuing veneration of The Rock. Known as "pamachapuka" (stone from the sky) to the natives of this area, The Rock was a marker along an important trail from Hackensack to Wyckoff. The Rock would likely have served as a meeting place along the trail where tales could have been told to those gathering.

HERE ARE A FEW HIGHLIGHTS FROM 350 YEARS OF NEW JERSEY HISTORY

2014 marks a milestone in area history, and not just because the Super Bowl is coming. Happy 350th Birthday, New Jersey! And happy 120th, Glen Rock!

1664: The Dutch colony of New Netherland was seized by the English.

1776+: More battles were fought in New Jersey during the American Revolution than

in any other colony.

1789: New Jersey became the first state to ratify the United States Bill of Rights.

1862: The 22nd New Jersey Volunteer Infantry was mustered in to serve with the Army of the Potomac during the Civil War. Men from what would become Glen Rock served in this unit.

1894: Glen Rock became an independent incorporated borough, one of 26 Bergen County boroughs formed that year. Glen Rock's boundaries included land from Ridgewood Township and Saddle River Township.

1988: The GR Historical & Preservation Society was founded to prepare for the borough's Centennial in 1994.

1919 HOUSE PROJECT



S. Soldin house, S. Maple Ave.

Leo Brown is heading an interesting GRHPS project to recreate a 1919 Sunday News supplement from our archives. This supplement features photos of area houses, including several prominent homes in Glen Rock as well as Ridgewood and Midland Park. Our copy of the supplement is in fragile condition. This project will

result in a copy on laminated, spiral-bound pages that can be handled without fear of further damage. Leo and his project posse are busy locating and snapping current photos of the houses in the old supplement, with the goal of including the "today" shots alongside the 1919 shots in the recreated booklet. Many of the original homes are still

standing, although most have seen some alterations—from porch enclosures to room additions.

The finished project will enable this resource from 1919 to become publicly accessible once again, with the added bonus of including current photos of the same houses.

PHOTO LOVE

How can you make sure that your treasured family photographs stick around for future generations to enjoy? Here are a few tips:

1. Do NOT use the magnetic photo album pages (you know, the ones with the sticky surface and plastic overlays). Use archival pocket pages that have passed the PAT (Photographic Activity Test) instead.
2. Do NOT place originals in frames on public view. Light exposure will fade your photographs to nothingness. Place a color copy in the frame and save the original in an album.
3. DO mark the back of the photo with a date and identifications ASAP. Use a 4B or 6B pencil, writing on the back of the photo in the margin area. You think you will
4. Do NOT use these items with your photos: sticky labels; paperclips; rubber bands; Post-It notes; glassine envelopes; Scotch tape; craft glue. All are very damaging.



The Romefelt Sisters visit The Rock, 1937. Photo donated to the GRHPS by Nancy (Romefelt) Mapes.

RECENT DONATIONS & ACQUISITIONS

The recent reorganization of our interior space at the Main Line Station has created a display area featuring railroad memorabilia. New purchases include two railroad lanterns and several books on the Erie Railroad and its stations (including the Main Line Station).

Lina DeFelippis of Lina's Tailoring on Rock Road has given us a dressmaker's

model. Our model will be a fun way to display vintage clothing, which we are now seeking.

The Glen Rock Police Department has presented us with several items on extended loan. Stop by the Station to see a variety of GRPD memorabilia including early photos.

We have added two prints of

Glen Rock scenes, painted by local artist Val Fox, to our collection in appreciation of two long-time GRHPS supporters: former president, Gunnar Berg and former vice-president, Reggie Aber.

The GRHPS is grateful to residents who have generously donated old photos and postcards; an old enamel street sign; school yearbooks; maps and display materials.

DID YOU KNOW
THAT TED
BURKE AND
GLEN ROCK TV
ARE HELPING US
TRANSFER OUR
OLD FILMS REELS
TO DVD?

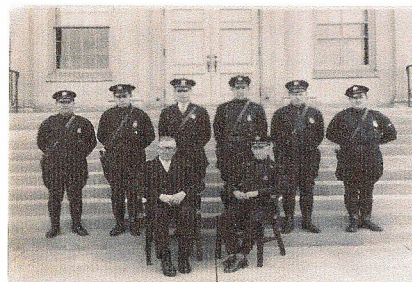
POLICE BLOTTER

In case you missed our police displays at the Library here are a few excerpts from the old blotters:

Dateline: September 11, 1921. An attempt was made to transfer a quantity of liquor on Harristown Road but was halted by the appearance of the Police. Several shots were fired but the parties escaped.

Dateline: October 31, 1923. S. Soldin, South Maple Avenue, reported his daughter opened the front door to go out to a party, when some boys smothered her with rotten tomatoes. Chief Houlihan detailed Officer Jensen to investigate. Officer reported he could not find parties responsible for this act.

Dateline: October 18, 1929. Brush fire Tonawanda Rd. & Ferndale Ave. Fire call came in on phone Ridge 3800 for brush fire. Investigated by Officer Meyer, found that fire was caused by sparks from Erie RR train on Main Line.



GRPD,
1930s

GRHPS

Glen Rock Historical & Preservation Society

PRESIDENT: SUE TRYFOROS

VICE PRESIDENT: KAY TUIITE

TREASURER: GEORGE DORBAD

SECRETARY: BARBARA SCHINELLER

CORRESPONDING SECRETARY: DIANE HERRLETT

P. O. Box 581

Glen Rock, NJ 07452-0581

Phone: 201.447.3865

E-mail: GRHistoricalSociety@gmail.com

Our headquarters and museum are located in the
Main Line Train Station

VISIT OUR FACEBOOK
PAGE:

WWW.FACEBOOK.COM/
GLENROCKHISTORY

THE GRHPS IS A 501(C) 3 ORGANIZATION.
DONATIONS ARE TAX-EXEMPT TO THE FULLEST
EXTENT OF THE LAW.

This publication was made possible by funding provided by:

PAREDES-GRUBE ARCHITECTURE

240 Rock Road, Suite 101, Glen Rock, NJ 07452 (201) 444-6003

Creative Vision, Technical Expertise, and Seamless Architectural Solutions

The GRHPS Mission Statement:

To heighten the public's awareness of, and appreciation for, the
history, growth and development of Glen Rock, New Jersey.

Can't bear to part with your treasured photos or letters? We understand! The
GRHPS can scan your originals for our collection so that you retain your treasures
while we add the information contained therein to our archives.

Help us continue to learn about our borough's past.

Our next meeting is: Thursday, December 17, 2013

7:30 pm. at the Main Line Station

WE APPRECIATE OUR VOLUNTEERS AND MEMBERS!

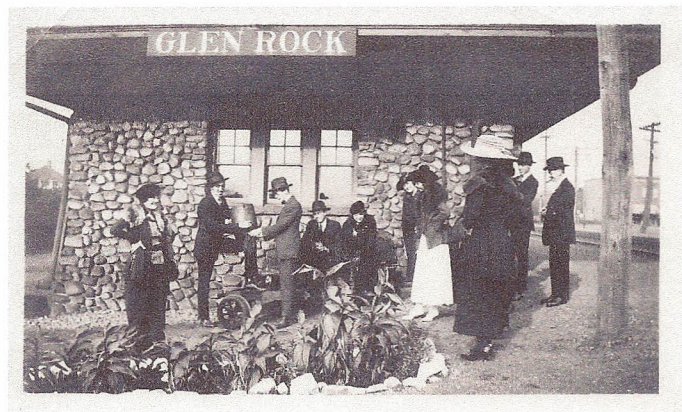
Where would we be without
our fantastic members and
volunteers? We shudder to
think.

Thanks to Glen Rock Eagle
Scout, Dan Stein, our Main
Line Station museum and
headquarters is once again
visitor-friendly. Dan and his
crew rearranged our space to
make it more functional and
efficient, and repaired,
stripped and painted the
front room to give us a real
museum area. We now have
a fresh, bright place to
feature Glen Rock material.
Our next step is to get the
museum space open to the
public on a more frequent
basis.

Our dedicated Wednesday
volunteer group (Susan Beal,
Leo Brown, Bill Gilligan,
Diane Herrlett, Karen
Mitchell, Barbara Schineller,
Diane Stern, Kay Tuite)
meets every week to help
organize the archives, main-
tain the Train Station and
place newly received
materials into archival
protection.

We could not progress
without the continuing
support of our membership.
Members' dues and
community donations enable
the GRHPS to add to our
collection and purchase
appropriate archival supplies.

We value our supporters!



Main Line Train Station, circa 1920s

COMING SOON: Look for landscaping
improvements around the Main Line Station

as a cooperative venture between the
GRHPS and the GR Environmental Commission

2013 GR HISTORICAL & PRESERVATION SOCIETY MEMBERSHIP FORM

Our Mission: To heighten the public's awareness of, and appreciation for, the history, growth and development of Glen Rock, New Jersey.

How we do this: The GRHPS collects, preserves and displays artifacts and documents relating to the history of the borough through presentations and exhibitions, public lectures and programs, and outreach projects. Our membership dues support these efforts and, together with the active participation of our members, enable us to continue as a valuable community resource.

What have we done lately?

- We installed a permanent historic photo gallery in the Lobby at the Municipal Building.
- We have reached out to the greater Glen Rock community through our Facebook page, www.facebook.com/glenrockhistory.
- We worked cooperatively with the GR High School and the GR Library to present a public program on "Glen Rock Heroes".
- We oversaw Daniel Stein's Eagle Scout project at the Main Line Station which updated and refreshed our GRHPS museum and work space.

WE VALUE OUR MEMBERS! PLEASE CONTINUE TO SUPPORT OUR EFFORTS BY RENEWING (OR BEGINNING) YOUR MEMBERSHIP AND VOLUNTEERING YOUR TALENTS FOR NEW AND EXCITING PROJECTS.

Please return this portion with your check made payable to *Glen Rock Historical & Preservation Society* to: George Dorbad, Treasurer, 70 S. Highwood Ave., Glen Rock, NJ 07452. All donations are tax-deductible.

Name: _____ Telephone #: _____

Address: _____ E-mail: _____

Membership: ☐ Regular \$10 ☐ Supporting \$25 ☐ Sustaining \$50 or more
☐ Corporate \$100 or more ☐ Other amount

☐ My company can provide a matching donation. Please contact: _____

☐ I don't wish to join at this time, but here's a tax-deductible donation. Amount: _____

☐ I'd like to volunteer for special projects.