

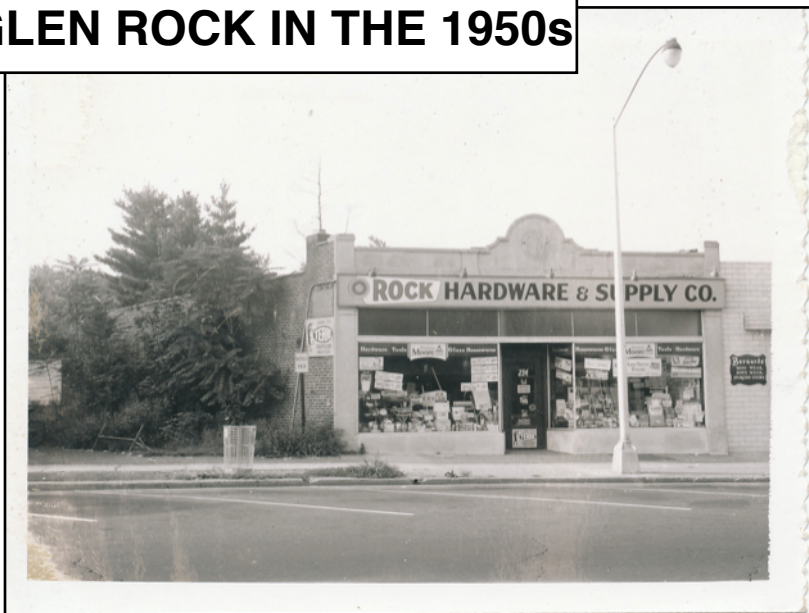
GLEN ROCK HISTORICAL & PRESERVATION SOCIETY PRESENTS:

GLEN ROCK HISTORY

VOLUME 2, ISSUE 4

WINTER 2015/16

GLEN ROCK IN THE 1950s



*The Rock Hardware & Supply Co., 1958
Currently the home of Francesca's Pizza*

The GRHPS recently received a treasure trove of photos from Alan Deaett. The photos are of Glen Rock businesses, mostly of the Central Business District but not all, and they seem to have been taken either for or by the Glen Rock Tax Assessor's office in 1958 and 1959.

The post-WWII 1950s was a booming time for much of the U.S.A. and Glen Rock was no exception. Housing developments were going up like wildfire in the south-east part of town, and the population was expanding at a rate that required the construction of not one but two new elementary schools (Coleman and Hamilton). Many of the businesses along Rock Road were free-standing structures, with empty lots as "cut throughs" or bicycle parking. The lots slowly filled in with new structures to form the Central Business District we know today.

*At right: Rock Ridge Pharmacy, 1958
Currently the home of Little Joe & John's Barber Shop*

LOOK INSIDE

MORE 1950s page 2

NAME GAME page 3

1952 GR PLAN page 3

MEMBERSHIP page 4





In 1958, the Glen Rock Inn had not yet expanded into the space occupied by the Glen Rock Bakery (the jelly donuts were divine).

**Items found in old Council Minutes,
extracted by George Hubschmitt:**

March 1952, the Olympic-sized Municipal Pool was completed.

1954 street name changes: Grandview Road became Pinelynn Road; Roger Place became Boulevard; Farragut Place became Demarest Place.

July 1955: agreed to purchase Kilroy property for \$28,000. This later became the Municipal Annex.

April 1958: appointed Neil Finn as acting Chief of Police.



RANDOM NOTES FROM THE FIFTIES

Following are notes on Glen Rock during the 1950s. These reminiscences are part of the GRHPS archives. The Fifties was a decade of great change caused in large part by the automobile, which made travel and commuting much more convenient. There were four gas stations on Rock Road alone.

Thank you to George Hubschmitt, Gregory and Helen Lee, and Diane Barsa for their written memories.



Kavner's was the place to go to grab an ice cream at the soda fountain or a newspaper. There was once a bowling alley in the basement. (photo:1959)

Many of Glen Rock's best known places made their first appearance during the 1950s:

- The Post Office on Glen Avenue
- The Arboretum land was purchased
- The Ambulance Corps Building
- The Glen Rock Senior High School

At left: Irv's Food Bar was known for its delicious greasy burgers and fries - a popular hang out spot for borough kids. Irv's is now part of Rock Ridge Pharmacy. (photo:1958)

NAME GAME: FABER FIELD

Faber Field has been in the Glen Rock headlines over the last couple of years - to turf or not to turf? - but many residents may not know its history. It was known simply as the Doremus Oval until October 11, 1957 when it was renamed the "Captain John J. Faber Memorial Field". Faber was a proud member of the Glen Rock Police Department for 26 years. He was also the driving force behind the Glen Rock Athletic Club's very successful semi-pro baseball team, "The Rockers", which played home games on the Doremus Oval. Faber was such a successful and inspirational Manager for the team that several high-profile players - Whitey Ford, Johnny VanderMeer and Larry Doby, to name a few - came to play for him. John J. Faber died in September 1954, still on active duty as a Glen Rock police officer.



Coach Johnny Faber with guest pitcher Whitey Ford, who pitched a shut out for the Glen Rock AC baseball team in 1951.

GLEN ROCK'S FUTURE, AS SEEN IN 1952

"The Glen Rock Plan: A Comprehensive Guide for Continuous Action Designed to Maintain and Increase Basic, Social and Economic Values" was a master plan drawn up in 1952. It looked back at the borough's history as well as proposed a new vision for the future. The Plan attempted to offer a footprint for development over the next 25 years. A few of the more interesting observations follow:

- There was considerable community opposition in 1952 to any increase in garden apartments or additional industry. Glen Rockers liked their borough as a bedroom community.
- A need was expressed for increased parking in the business areas.
- Additional park areas were recommended between Highwood and Midwood (this would become Sycamore Park); at Dean and Elizabeth Streets (this would become Dean Street Park); between Hamilton and Berkeley south of Rock; and in the low area around Greenway and Concord.
- A recommendation for a second fire station on the west side of the borough, due to the concern posed by the two railroad lines crossing Rock Road.
- A permanent War Memorial and an addition to the Municipal Building.
- Development of Elmwood and Rodney School sites (would become present Coleman and Hamilton Schools) and proposed Doremus Elementary School (to be located near the present Recycling Center). Plus the need for a Glen Rock High School by 1955, when Ridgewood High School would no longer accept Glen Rock students, due to overcrowding at Ridgewood.

G.R.H.P.S.

PRESIDENT: Sue Tryforos
VICE-PRESIDENT: Kay Tuite
TREASURER: Leo Brown
SECRETARY: Barbara Schineller
CORRESPONDING SECRETARY:
Diane Herrlett

P. O. Box 581
Glen Rock, N.J. 07452-0581

Phone: 201-447-3865
E-Mail: GRHistoricalSociety@gmail.com

Our headquarters and the Museum are
located in the Main Line Train Station,
176 Rock Road, Glen Rock, NJ 07452

"Glen Rock History" is edited by S. Tryforos

FIND US ON SOCIAL MEDIA:

www.FACEBOOK.com/GlenRockHistory
www.PINTEREST.com/GlenRockHistory
www.INSTAGRAM.com/GlenRockHistory
www.TWITTER.com/GlenRockHistory
and visit our website:

www.GlenRockHistory.org

This publication was made possible by funding from:

PAREDES-GRUBE ARCHITECTURE
240 Rock Road, Ste. 101, Glen Rock, NJ 07452
(201) 444-6003

*Creative Vision, Technical Expertise, and
Seamless Architectural Solutions*

The GRHPS Mission Statement:

To heighten the public's awareness of, and
appreciation for, the history, growth and
development of Glen Rock, Bergen County,
New Jersey

Meetings are held on the THIRD Thursday of
the month at 7:30 p.m., September through
June, at the Main Line Station

Please support us through the Amazon Smile program
<http://smile.amazon.com/ch/22-3199206>

THE GRHPS IS A 501(c)3 ORGANIZATION. DONATIONS ARE TAX-DEDUCTIBLE.

MEMBERSHIP INFORMATION

Please join us today

Membership levels: Regular \$10; Supporting \$25;
Sustaining \$50; Patron \$100

Become a GRHPS Member!

Send your check payable to GRHPS to:
GRHPS, P.O. Box 581, Glen Rock, NJ 07452-0581

Name _____

Address _____

Phone _____ E-mail _____



Come visit us-

MUSEUM AT THE STATION SCHEDULE

We will be open from 1 - 3 pm on the
following dates:

Dec. 27, 2015
Feb. 28, 2016

Jan. 31, 2016
Mar. 27, 2016